

# Commuter News & Notes



A Newsletter for Members of the MVTMA

Summer-Fall 2007/Volume6, Number 2

## Inside this issue:

- MVTMA annual Bike to Work events and Celebration 1
- Cycling Committee gets ready to launch surveys this summer and fall 1
- And the Winner Is...see who won this year's BtW raffles and this quarter's TMA GRH raffle 2
- Summer/Fall TMA Calendar of Events 3
- BtW 2007 Photo Gallery 3
- Vanpoolers wanted... 4
- Do you have property for lease or sale? Add or update your property on Merrimack Valley Means Business 4

## More than 100 Employees Participate in Bike Week 2007

Punctuated by a mixture of weather, the Merrimack Valley TMA's first Bike Week and 7th annual Bike to Work (BtW) events drew 105 participants from nine member companies. This year employees had their choice of days to commute to work by bike to various locations in the River Road area during the week of May 14th. The change in format from individual worksite events to area BtW days was conceived after last year's stormy weather forced the consolidation of several BtW events into one day and location. TMA Director, Andrea Leary stated, "the change in format allows employees to choose the day to commute during bike week that best meets their work and family schedule and also provides opportunities for friends and neighbors who work at different companies in the area to bike to work together." Employees biked a total of 2521 miles, averaging a 24 mile roundtrip commute per participant.



Andover Town Manager Buzz Stapczynski welcomes employees to the BtW Celebration at Staybridge Suites while TMA Director Andrea Leary looks on.

Employees were treated to a wonderful BtW Celebration this year thanks to the generosity of TMA member Staybridge Suites who donated their facility, the food, and grand prize for the event. Andover Town Manager Buzz Stapczynski welcomed participants who viewed the latest bike-wear and equipment from the Athlete's Corner and Buchikas Bike and Ski Shop, learned about cycling groups and rides from MassBike, Granite State Wheelmen, and Emmaus, fitness goals from the Philips Fitness Center staff, and provided suggestions for cycling improvements to Andover town planner Jacki Byerley. Thanks to the hard work of BtW co-chair Trisha Morris—who out did herself this year in soliciting double the raffle prize donations of previous years, attendees were given 5 tickets for a chance to win their choice of ten additional prizes.

## Cycling Committee Develops Surveys to Assist Area Cyclist

This summer the Merrimack Valley TMA cycling committee will launch an online survey designed to: 1) gather information to help recruit additional employees to participate in next year's BtW events; and 2) identify supports the TMA can implement to get more people into biking to work this summer and fall. Employees who are interested in cycling can provide their input via a survey link on the TMA's homepage at [www.MerrimackValleyTMA.com](http://www.MerrimackValleyTMA.com).

In addition to the summer survey, this fall the cycling committee hopes to work with local municipalities, the Merrimack Valley Chamber of Commerce and Planning Commission, and cycling groups to implement a survey/petition to identify the level of interest and potential use by employees and residents of a cantilevered bike path attached to the I-93 Merrimack River bridge. The data gathered from the survey will be provided to the Executive Office of Transportation with a request that funding for this project be included as a mobility priority within the state's bike plan.



# And the Winner Is...

## Bike to Work 2007 Prize Winners

### BtW Prize List

Giro Adult Bike Helmet  
 Vetta bike computer  
 Kryptonite Bike Lock  
 Camelbak Hydro Pack  
 Holiday Inn – Tewksbury Overnight stay w/b-fast for 2  
 Athlete's Corner Gift Certificate  
 Butchikas Gift Certificate  
 Goodale's \$25 Gift Certificate  
 NH Fisher Cats 4-pack Baseball Tickets  
 Pedro's BIO Cleaner  
 Pedro's Toothbrush Cog brush  
 White Lightning Self-cleaning Wax Lubricant  
 Blackburn Bike Safety Light  
 Jogonalite Reflective Yield Symbol  
 Jogonalite Reflective Stick-ons  
 Jogonalite Reflective Leg Bands  
 Third Eye Bike Helmut Mirror  
 Fudrucker's \$10 Gift Certificate  
 Academy Lanes 3 free strings for 2  
 4 Week Trial Membership Cedardale Health & Fitness  
 2 Showcase/Multiplex Cinema Movie Passes  
 2 Chunky's Cinema/Pub Movie Passes  
 MassBike Membership  
 NHBWA Membership  
 Earth Share SWAG bag s  
 Earth Share SWAG bag s  
 Earth Share Caps  
 Earth Share Totes  
 Earth Share Totes  
 Insulated Drink Pack

### Prize Winner/Company

Mike Evans – VICOR  
 David Houston - Philips  
 Ziggy Ivanouskas - VICOR  
 Dhruv Mahajan - Philips  
 Michael Tourville - Philips  
 Linda Sargent - VICOR  
 Andy Bellezza - Polycom  
 John Coffey - Polycom  
 Maureen Garvey - Verizon  
 Jose Troncoso - Philips; Tom Davis - Philips; Mark Kolenik - Philips  
 Rudy Mutter - VICOR  
 Michael Linsky - HP; Rick Martin - Philips  
 Jin Ming Chen - Philips  
 Todd Merrill - Philips  
 John Kolifraith - VICOR  
 Jeff Rees - HP; Cecil Dean - VICOR  
 Tom Eilat - HP  
 Mike Shapiro - Philips; Wilson Sawyer - Enterasys; Eric Wlodyka - Philips  
 Susan Carella - Putnam; David Houston - Philips; Jill Boisseau - VICOR  
 Bob Demers - VICOR  
 Dhruv Mahajan - Philips  
 Dennis Lizier - HP; John Silva - Philips  
 Dean Rose Philips  
 Dave Page - Verizon  
 Mark Ziel - Philips; Mike Evans – VICOR  
 Marian Tapu – Philips; Steve Champagne – Rreef/Enel  
 Frank Gaiero - Verizon; Elvis Mejia – Philips  
 John Milne – Philips; Rick Lohnes – Eisai  
 Shelly Germano – VICOR; Paul Sirianni – Boston Properties/Zurich  
 Sarah Christiansen - Philips

**BtW 2007 Grand Prize:  
 Staybridge Suites  
 Weekend Getaway  
 Winner  
 Dave Dishaw—Philips**

## Monthly GRH Raffle Winners

To thank our member employees for using an alternative commute mode, each month the TMA draws a name from the GRH database for a \$10 gift card to Dunkin Donuts. Congratulations to the winners listed below!

### March 2007

John Trani  
Hewlett-Packard

### April 2007

Garrett Ertle  
VICOR

### May 2007

David Adams  
Philips

### June 2007

Sharon Berube  
Enterasys



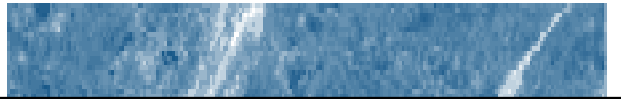
## TMA Summer/Fall Calendar of Events

<p><b>August 7</b> 12:00 AM – 1:30 PM <b>Cycling Committee Meeting</b> Eisai Research Institute 100 Federal Street Andover, MA</p>	<p><b>August 28</b> 9:00 AM – 10:30 AM <b>Employee Transportation Advisor Meeting</b> Philips Medical Systems 3000 Minuteman Road Andover, MA</p>	<p><b>September 19</b> 9:30 AM—11:30 AM <b>TMA Board of Directors Annual Meeting</b> Location TBD</p>	<p><b>September 24—October 5</b> <b>Fall TMA Alternative Commute Onsite Promotions</b> Locations and Times TBD Please Refer to the TMA's online calendar at <a href="http://www.MerrimackValleyTMA.com">www.MerrimackValleyTMA.com</a> after September 1st.</p>
--	---	---	---

## Bike to Work 2007 Photo Gallery



Merrimack Valley TMA  
c/o Northeast Transit Planning & Management Corp.  
28 Brook Road  
Marblehead, MA 01945



## Vanpoolers Wanted!

**I-93 NH  
and  
NH/MA Seacoast**

**to River Road & Dascomb Road areas**

**Save money on gas and maintenance,  
wear and tear on your car, reduce  
your commute stress!**

**Contact TMA Director Andrea Leary  
[andrealeary@verizon.net](mailto:andrealeary@verizon.net)  
for details on routes and schedules**

## Increase your Property's Exposure to Potential Tenants

Is your property listed with Merrimack Valley Means Business? Merrimack Valley Means Business uses GIS Mapping and Pictometry to provide visual information about your property and surrounding roadways. Increase your property's exposure to companies looking to relocate in the Merrimack Valley both directly through Merrimack Valley Means Business and through an additional portal on the Merrimack Valley TMA website.

Add or update your property today at  
[www.MerrimackValleyMeansBusiness.com](http://www.MerrimackValleyMeansBusiness.com)

### CONTACT US:

Phone: 781-639-6262

Fax: 781-639-6263

Email: [andrealeary@verizon.net](mailto:andrealeary@verizon.net)

